

Implementation microcontroller-based bioethanol levels measurement tool on bioethanol purification equipment

by Yuana Susmiati

Submission date: 11-Apr-2023 12:30PM (UTC+0700)

Submission ID: 2061314640

File name: ._Ser._Earth_Environ._Sci._207_012063_-_YUANA_SUSMIATI_S.TP.pdf (2.04M)

Word count: 1677

Character count: 8838

PAPER · OPEN ACCESS

Implementation microcontroller-based bioethanol levels measurement tool on bioethanol purification equipment

To cite this article: E Antika and Y Susmiati 2018 *IOP Conf. Ser.: Earth Environ. Sci.* **207** 012063

View the [article online](#) for updates and enhancements.

You may also like

- [Bioprocess engineering of bioethanol production based on sweet sorghum bagasse by co-culture technique using *Trichoderma reesei* and *Saccharomyces cerevisiae*](#)
E A Syadiah, L Haditjaroko and K Syamsu

- [Formulation of Bioethanol From Pineapple Skin Waste and Applied as Wax Inhibitors](#)
F Fadly, M K Afidhol, F Hidayat et al.

- [Tolerance of Impurities in Bioethanol on Pd/C and Pdru/C Catalysts Toward the Ethanol Oxidation Reaction in Alkaline Media](#)
Rongrong Chen, Jing Qi, Junsong Guo et al.



244th Electrochemical Society Meeting

October 8 – 12, 2023 • Gothenburg, Sweden

50 symposia in electrochemistry & solid state science

▶ Deadline Extended!
Last chance to submit!

New deadline:
April 21
submit your abstract!

Implementation microcontroller-based bioethanol levels measurement tool on bioethanol purification equipment

E Antika^{1*} and Y Susmiati²,

¹Department of Information Technology, Politeknik Negeri Jember, PO BOX 164 Jember East Java, Indonesia.

²Department of Engineering, Politeknik Negeri Jember, PO BOX 164 Jember East Java, Indonesia.

*elly_antika@polije.ac.id

Abstract. In bioethanol purification device, result of process has to measure the level of alcohol usually by alcohol meter or by picnometer but need more than 100ml sample and need much time to measure. The measurement alcohol level by sensor detecting the vaporized alcohol in the air that will be caught by gas sensor TGS 2620. Therefore, development of simple and quick detection of alcohol level in purification result is strongly required. The alcohol equipment detection consists of a microcontroller module, a sensor module, output module and a bioethanol tube. There are two tubes that are used as a container for the bioethanol purification. The first container is automatic alcohol sensor tube, and the second container is storage tube for result bioethanol purification. Bioethanol data detection is displayed through the LCD and a computer. The microcontroller module regulates the delay time, process sensing and display results. After alcohol levels are detected, then the alcohol sensor will be cleaned by blowing the fan so that the alcohol vapor attached will disappear. The delay time is set so that the sensor reading has an accurate value with the smallest error detection.

1. Introduction

In bioethanol purification device, result of process has to measure the level of alcohol by alcohol meter or by picnometer. The measurement by that equipment needs sample more than 100ml. The bioethanol purification device uses rectification distillation sieve tray type and can produce 90% bioethanol [4].

The measurement alcohol level by sensor for detecting the vaporized alcohol in the air that will be caught by gas sensor TGS 2620 type. The sensing process, converting analog to digital data and displaying data to LCD [3][5]. Alcohol level detection consists of a microcontroller module, a sensor module and output module. The microcontroller module regulates the detection time, detection delay, process sensing and display results. The sensor module consists of a sensor circuit and fan circuit. And the output module consists of LCDs, and ports for connection devices to the computer [1]. The detection alcohol content is affected by humidity and room temperature [2]. Therefore, development of simple and quick detection of alcohol level in purification result is strongly required.

In this paper, we have studied on making automatic detection of alcohol on storage tube for bioethanol purification system using a TGS 2620 sensor.



2. Methodology

The implementation of bioethanol level detection devices to improve the performance of bioethanol purification equipment as follows:

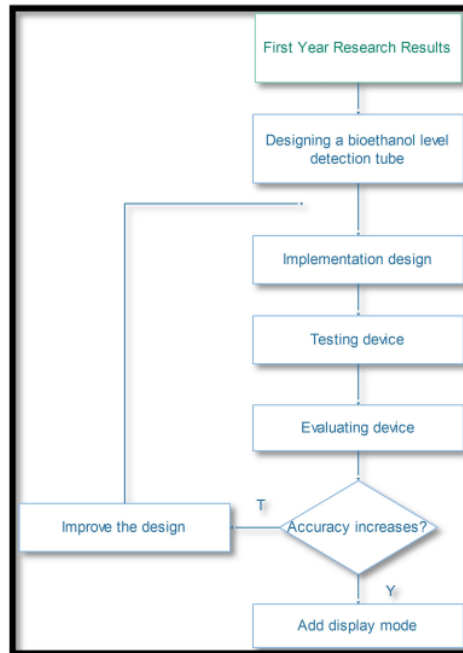


Figure 1. Research method for implementing bioethanol level detection devices.

Caption 1 as follows:

- The first research is determine alcohol sensor that has a faster response and good accuracy. Measurement bioethanol levels requires closed room and at normal room temperature condition.
- The design stage make a tube design with an alcohol sensor and an automatic faucet.
- The implementation of the design by making a container tube from bioethanol purification result and placing a sensor to detecting alcohol levels automatically. The device is driven the sensor by motor forward and backward to the hole in the tube. The sensing process requires setting the timer detection.
- Testing has purpose to see the results of the implementation.
- Evaluation is carried out for repairing bioethanol level detection devices.
- If the sensor tube has an inaccurate test it will change the design and implementation of the sensor tube. If it has an accurate, the other output data display mode is added.

3. Experimental

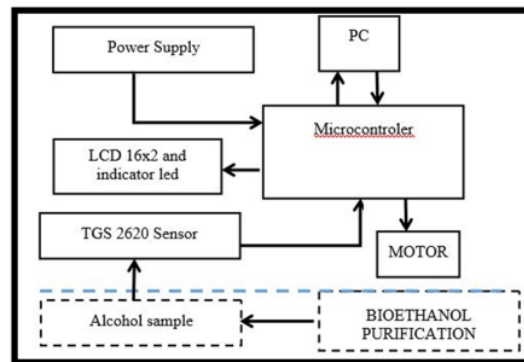


Figure 2. Bioethanol detection system

3.1 Results of the implementation the actuator instructions

The actuator is the output of the process, and it is a motor. It is useful for pushing and pulling the slider in scanning process. The implementation device by conducting instructions through the interface that has been connected to Arduino. The initial setting are time, date and scanning delay. The slider will move forward when starting scanning and re-enter the box when scanning delay or scanning alcohol ends. Time synchronization can be seen in table 1.

Table 1. Synchronize delay timer

Start/Stop scanning	Scanning delay	time(stopwacth)	Time difference
Start	00:15:00	00:14:59	1 second
Start	00:05:00	00:05:01	1 second
Start	00:10:00	00:10:01	1 second

3.2 Determination sensor height from the surface of bioethanol liquid

The position of sensor in the alcohol detection devide is determined by measuring the voltage value of sample bioethanol with a difference height on 1 cm, 2 cm, 3 cm and 4 cm from bioethanol liquid surface. Measurements were made 3 times and results that were not different from 1, 2, and 3 testing, see table 2 more clearly.

Table 2. Determination sensor height

Height (cm)	testing 1 (V)	testing 2 (V)	testing 3 (V)
1	3.02	3.06	3.07
2	3.04	3.06	3.06
3	3.03	3.06	3.06
4	2.85	2.90	2.90

From the results testing, the sensor placement is good between 1 cm to 2 cm from surface of bioethanol liquid.

3.3 The results of device

The bioethanol detection system can be seen in Figure 2. The flowchart process can be seen in Figure 3.

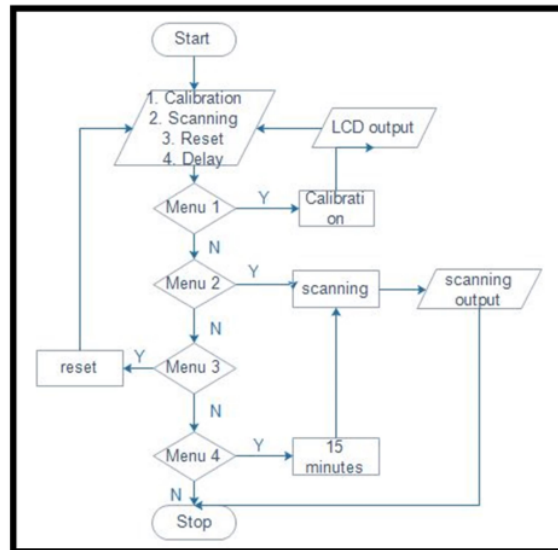


Figure 3. Flowchart process alcohol detection device.

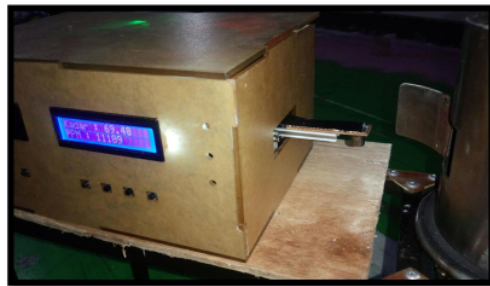


Figure 4. Detection bioethanol level

3.4 Testing detection with and without delay time

The bioethanol sample is used in testing 5 times in an hour and the length of each measurement is 2000 times the arduino machine cycle.

- a. Measurement 44% alcohol level

The data will be taken on average as a result of alcohol measurement, more clearly can be seen in table 3.

Table 3. Results alcohol measurement 44%

alcohol sample	testing	without delay	with delay 15"
	1	46.38%	47.82%
	2	49.31%	48.13%
	3	47.53%	50.20%

44%	4	46.80%	45.92%
	5	50.01%	47.66%

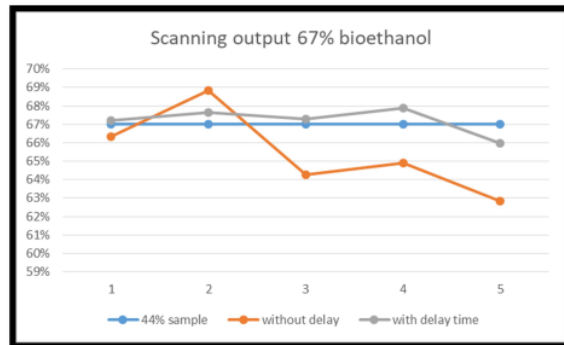


Figure 5. Scanning output 44% bioethanol

b. Measurement 67% alcohol level

60% alcohol level is measured with an alcohol meter and will be detected through a closed tube, the measurement results can be seen in table 4.

Table 4. Results of alcohol measurement 67%

alcohol sample	testing	without delay	with delay 15"
67%	1	66.33%	67.22%
	2	68.82%	67.63%
	3	64.28%	67.29%
	4	64.91%	67.89%
	5	62.83%	65.96%

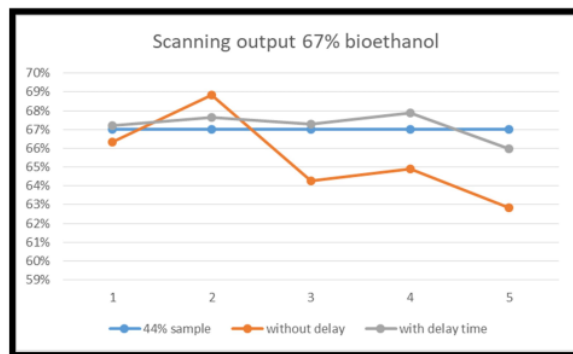


Figure 6. Scanning output 67% bioethanol

One of measurements result through the interface can be seen in Figure 7.



Figure 7 Measurement by interface

4. Conclusion

The height of sensor placement above the surface bioethanol liquid is 1 cm to 2cm. Scanning alcohol level in bioethanol need delay time, it is 15 minutes. Device can display the scanning output by LCD and by computer interface.

Acknowledgements

The authors gratefully acknowledge the financial support given by RISTEK DIKTI 2017-2018.

References

- [1] Antika, E., Susmiati, Y., 2017, *Design and Implementation of MQ3 Sensors and TGS2620 Sensors Based on Microcontrollers Supporting of Bioethanol Purification*, SEMNAS Hasil Penelitian dan Pengabdian Politeknik Negeri Jember 2017. (in Bahasa)
- [2] Antika, E., Susmiati, Y., dan Nuha, F.U., 2018, *Comparison of Bioethanol Level Reading Devices Using MQ3 Sensors and TGS2620 Sensors*, KNSI 2018, Pangkal Pinang (in Bahasa)
- [3] Simatupang, G.H.N., Sompie, S.R.U.A dan Tulung, N.M. 2015. *The design detector through ekhalasi alcohol levels using a sensor TGS 2620-based microcontroller arduino UNO*. E-Jurnal Teknik Elektro dan Komputer, Vol.4 No.7 (2015) ISSN : 2301-8402. (in Bahasa)
- [4] Susmiati, Y. dan M. Nuruddin. 2015. *Bioethanol purification by destilation rectification sieve tray type for fuel grade ethanol (FGE)*. Laporan penelitian Hibah Bersaing Tahun Anggaran 2015. Politeknik Negeri Jember. (in Bahasa)
- [5] <http://www.figarosensor.com/products/docs/TGS%202620C%280814%29%20pdf.pdf>
- [6] <https://www.sparkfun.com/datasheets/Sensors/MQ-3.pdf>
- [7] <https://www.arduino.cc/en/uploads/Main/ArduinoNanoManual23.pdf>

Implementation microcontroller-based bioethanol levels measurement tool on bioethanol purification equipment

ORIGINALITY REPORT

21 %
SIMILARITY INDEX

19 %
INTERNET SOURCES

21 %
PUBLICATIONS

12 %
STUDENT PAPERS

MATCHED SOURCE

1

Submitted to Aston University
Student Paper

6 %

8%

★ sipora.polije.ac.id

Internet Source

Exclude quotes On

Exclude bibliography On

Exclude matches < 1%